

Vanderbilt University Medical Center

The Annette and Irwin Eskind Biomedical Library
Nashville, TN 37232-8340

Phone: 936-1410
Last Updated: 1/31/2008

Using EndNote®: Importing PubMed Citations

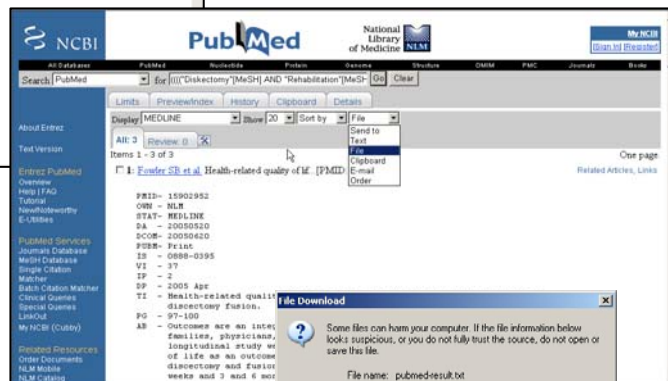
EndNote® and other citation management programs allow users to import citations from multiple database services and format those citations in various output styles. Many users employ citation management programs to create personalized databases/files of articles of relevance to their work. Citation management programs also format references in documents, automatically generating bibliographies in a variety of output styles.

There are two major steps involved in importing references into EndNote. First, select the citations from the source database and download them in an appropriate format. Second, import those references into EndNote using the correct import filter. Once the references have been imported into an EN library, they can be exported as a print bibliography, an electronic text file, or imported into a Microsoft Word document.

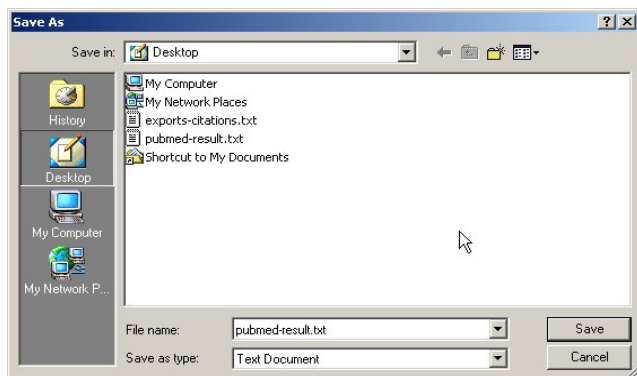
1. Access PubMed. Execute your search and mark citations for import by checking each box. Once all citations are marked, select MEDLINE from the Display drop-down menu. (This saves the citations in a tagged or coded field format in required by EndNote for proper import). From the Send to drop-down menu, select File. Choose a filename (or use the default) and location to save a text file.



Mark citations. From the Display menu select MEDLINE



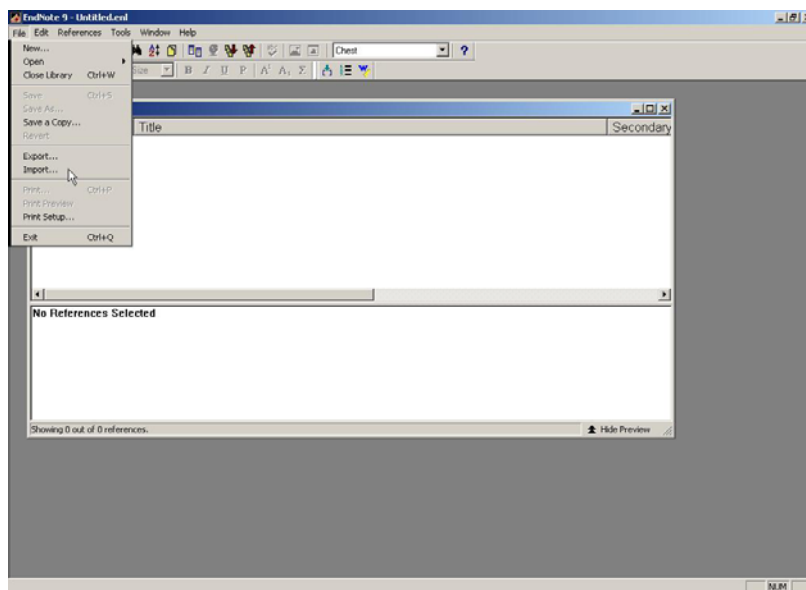
Citations should appear with each field tagged or coded (e.g. au=author, la=language). EndNote reads these tags as it imports citations



Use the default filename and save a text file of the PubMed results

Using EndNote®: Importing PubMed Citations

2. Open EndNote and create a new library into which to import citations (from the File menu, choose New) or select an existing library (from the File menu, choose Open). Then click on Import in the File menu. Click on the Choose File button and locate the PubMed text file. Then select the appropriate Import Option from the drop-down menu. If the database filter you need is not listed in the Import Options menu, click on Other Filters to choose from a wide variety of import filters. The import filter must match the source database from which the citations have been saved. Select to import all references regardless of duplication, discard the duplicates during import, or transfer the duplicates to a temporary duplicates library. After the citations are properly imported, there is no need for the saved text file.



3. The EndNote library window will display the citations added. To view all references in the EndNote library (if adding to a pre-existing library), go to the References Menu and select Show All References.