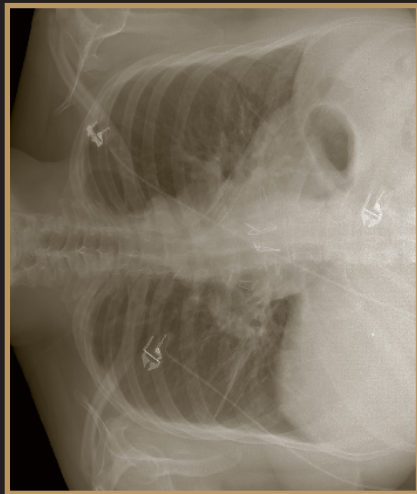


Vanderbilt University • 1161 21st Avenue • Nashville, TN 37232-2650

Non Profit ORG.  
U.S. Postage  
PAID  
Nashville, TN  
Permit No. 831



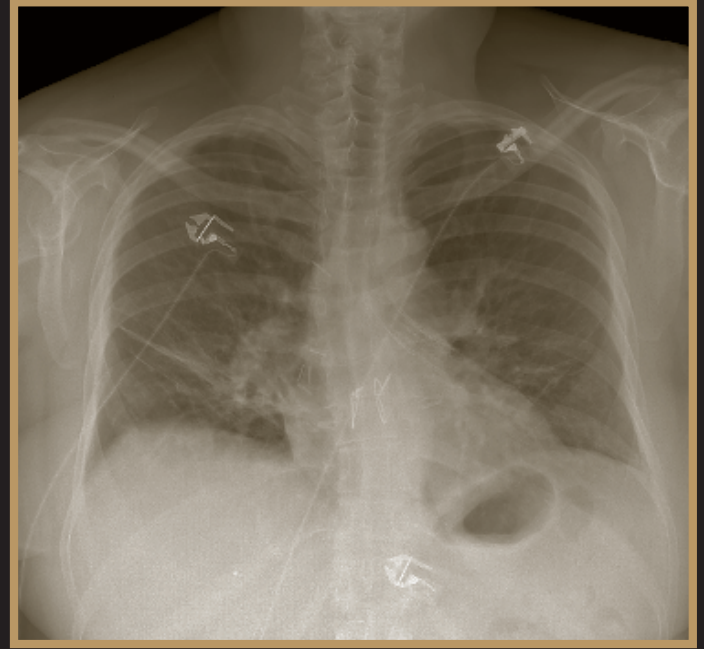
FOURTH ANNUAL

# Advanced Lung Disease

and Critical Care Conference

December 6, 2008

Hilton Nashville Downtown  
Nashville, Tennessee



## FOURTH ANNUAL Advanced Lung Disease and Critical Care Conference

December 6, 2008  
Hilton Nashville Downtown  
Nashville, Tennessee

Presented by the  
Vanderbilt Division of Allergy,  
Pulmonary & Critical Care Medicine

VANDERBILT



School of Medicine

# Course Schedule

Saturday, December 6, 2008

7:15 a.m. – 7:50 a.m.	Registration
7:50 a.m. – 8:00 a.m.	Welcome
8:00 a.m. – 8:45 a.m.	<b>Diagnosis and Treatment of Pulmonary Vasculitis</b> John H. Newman, MD
8:45 a.m. – 9:30 a.m.	<b>The Persistently Troublesome Cough – Chronic Cough Update</b> Richard Irwin, MD
9:30 a.m. – 9:45 a.m.	Questions & Discussion
9:45 a.m. – 10:00 a.m.	Break
10:00 a.m. – 10:45 a.m.	<b>Making Sense of the New Therapies for Pulmonary Hypertension</b> Ivan M. Robbins, MD
10:45 a.m. – 11:30 a.m.	<b>Treatment of Acute Thromboembolic Disease</b> Arthur P. Wheeler, MD
11:30 a.m. – 11:45 a.m.	Questions & Discussion
11:45 a.m. – 12:00 p.m.	<b>Case Presentation</b> Richard Irwin, MD
12:00 p.m. – 1:00 p.m.	Lunch (provided)
1:00 p.m. – 1:45 p.m.	<b>Pulmonary Complications of HIV Infection</b> Stephen P. Raffanti, MD, MPH
1:45 p.m. – 2:30 p.m.	<b>Recognition and Management of Severe CAP</b> Richard G. Wunderink, MD
2:30 p.m. – 2:45 p.m.	Questions & Discussion
2:45 p.m. – 3:00 p.m.	Break
3:00 p.m. – 3:45 p.m.	<b>Update of Pleural Disease</b> Richard W. Light, MD
3:45 p.m. – 4:00 p.m.	<b>Case Presentation</b> Richard G. Wunderink, MD
4:00 p.m.	Adjourn

*Schedule subject to change.*

# General Information

## Purpose

Over 30 million Americans have chronic lung disease and almost 335,000 die from lung disease each year. Despite the fact that other leading causes of death have declined in recent years, death rates for lung disease continue to rise in the United States. This fact is particularly relevant in the state of Tennessee where death rates from lung disease remain significantly higher than other states in the southeastern region.

To create greater awareness of the effects of lung disease and newer strategies for managing patients with lung disease, this conference will present findings from the most recent research on acute thromboembolic disease, chronic cough, community acquired pneumonia, pleural disease, pulmonary hypertension, and pulmonary vasculitis.

## Target Audience

This program is designed for pulmonologists and critical care physicians. Internists, cardiologists, rheumatologists, and family practitioners may also have an interest in this CME activity.

## Learning Objectives

After participating in this CME activity, participants should be able to describe and discuss:

- the most current options for managing advanced lung disease
- current medical approaches to treating patients with acute thromboembolic disease
- new therapies for pulmonary hypertension
- the diagnosis and treatment of pulmonary vasculitis

## Registration Fee

Your registration fee includes attendance at all sessions, the course syllabus, CME credit, and all food functions. Please see the registration form for rates.

## CME Credit

Vanderbilt School of Medicine is accredited by the Accreditation Council for Continuing Medical Education to provide continuing medical education for physicians.

Vanderbilt School of Medicine designates this educational activity for a maximum of 6.50 *AMA PRA Category 1 Credits™*.

Physicians should only claim credit commensurate with the extent of their participation in the activity.

## Accommodations

Rooms have been reserved at the Hilton Nashville Downtown. In order to receive the group rate, please mention you are attending the 4th Annual Advanced Lung Disease and Critical Care Conference when making your reservation. Reservations made after Wednesday, November 5, 2008 will be made on a space available basis at regular rates.

Hilton Nashville Downtown  
121 4th Avenue South  
Nashville, TN 37201  
Phone: (800) 445-8667 or  
(615) 620-2150  
Group rate: \$149 per night + tax  
Reservations deadline:  
November 5, 2008

## Cancellation Policy

If you must cancel your registration for this course, we will refund your registration fee, less a \$25 administrative fee, provided you notify us by November 21, 2008. In the event of cancellation or rescheduling of this CME activity due to unforeseen circumstances, Vanderbilt University will refund registration fees in full. Vanderbilt University is not responsible for non-transferable, non-refundable airline tickets or hotel accommodations purchased in connection with attendance at this CME activity.

## Disclosure

It is the policy of Vanderbilt School of Medicine that participants in CME activities be made aware of any affiliation or financial interest that may affect the speaker's presentation(s). Each course director, planner and speaker has completed and signed a conflict of interest statement. The faculty members' relationships will be disclosed to the audience.

## Americans with Disabilities Act

It is the policy of Vanderbilt School of Medicine not to discriminate against any person on the basis of disabilities. If you feel you need services or auxiliary aids mentioned in the ADA in order to fully participate in this continuing education activity, please email [vanderbiltpulmonaryconference@comcast.net](mailto:vanderbiltpulmonaryconference@comcast.net) or attach a note to your registration form.

## Additional Information

Please contact:  
[vanderbiltpulmonaryconference@comcast.net](mailto:vanderbiltpulmonaryconference@comcast.net)  
(615) 762-9252

# Faculty

# Registration

## Guest Faculty

### Richard Irwin, MD

Professor of Medicine  
Division of Pulmonary, Allergy & Critical Care Medicine  
University of Massachusetts Medical School  
Worcester, Massachusetts

### Richard G. Wunderink, MD

Professor of Medicine  
Division of Pulmonary & Critical Care  
The Feinberg School of Medicine  
Northwestern University  
Chicago, Illinois

## Vanderbilt Faculty

### Richard W. Light, MD

Professor of Medicine

### John H. Newman, MD

Elsa S. Hanigan Professor of Pulmonary Medicine

### Stephen P. Raffanti, MD, MPH

Executive Director, Comprehensive Care Center  
Associate Professor of Medicine

### Arthur P. Wheeler, MD

Associate Professor of Medicine

## Course Directors

### Aaron P. Milstone, MD

Associate Professor of Medicine  
Medical Director, Lung and Heart-Lung Transplant  
Volume Reduction Surgery Program

### Ivan M. Robbins, MD

Associate Professor of Medicine  
Director, Pulmonary Vascular Center

name

preferred name for name tag

mailing address

city

state

zip

telephone

fax

e-mail

specialty/profession

## Registration Fees *(please circle one)*

Physician	\$100.00
Other Health Care Professional	\$50.00
Students/Residents/Fellows	exempt

## Payment

Make checks payable to Vanderbilt School of Medicine.

Credit cards are accepted online only. If you wish to pay your registration fee with a credit card, please register online at [www.VanderbiltPulmonaryConference.com](http://www.VanderbiltPulmonaryConference.com)

Register online at

[www.VanderbiltPulmonaryConference.com](http://www.VanderbiltPulmonaryConference.com)

or return this form along with payment to:

Vanderbilt Lung Disease Conference  
5116 Overton Road  
Nashville, TN 37220  
(615) 762-9252

Register online at

[www.VanderbiltPulmonaryConference.com](http://www.VanderbiltPulmonaryConference.com)