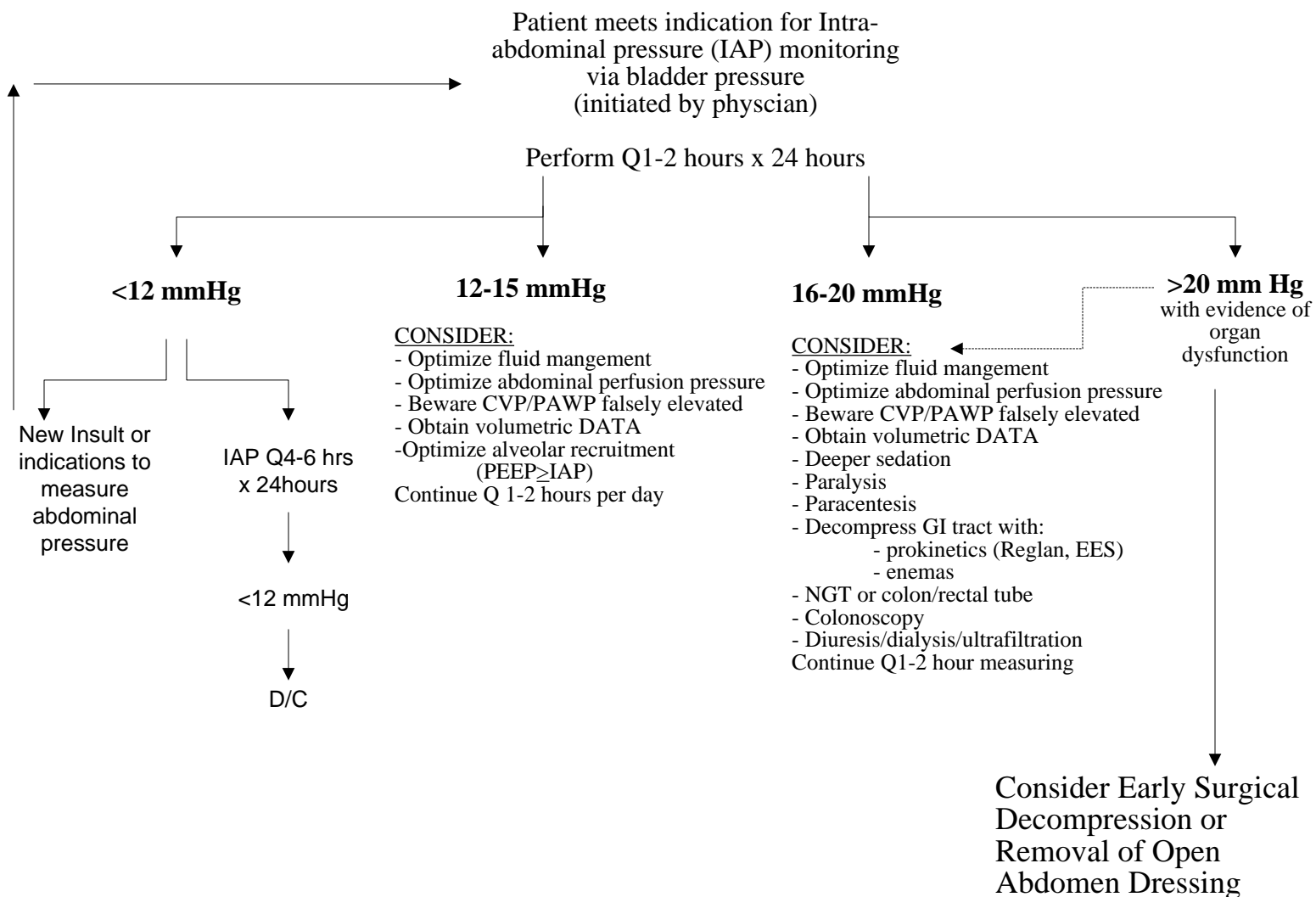


## Indicators:

- Severe SIRS or sepsis
- Shock/hypotension
- Moderate to severe pancreatitis
- Large retroperitoneal bleed
- Large ascites
- Large ventral hernia repair
- Ruptured AAA repair
- Mesenteric ischemia
- Damage control laparotomy/Open abdomen
- Intra-operative fluid balance >5L
- >5L crystalloid or > 4 units pRBC in 8 hours
- >10 units pRBC in 24 hours
- Severe CHI (GCS < 8 with ICP in place)
- Intracranial hypertension (ICP > 20 mm Hg)
- Prone position
- Greater than 20% Total body surface area burn



## REFERENCES:

- Malbrain et al. Intensive Care Med (2006) 32:1722-1732.
- Cheatham et al. Intensive Care Med (2007) 33:951-962.
- Ivatury et al. Abdominal Compartment Syndrome textbook. 2006